

# Potential Annexation of Manitou to Tacoma

Dan Cardwell  
Pierce County Planning and Public Works

Lihuang Wung  
Tacoma Planning and Development Services

May 14, 2018



## Community members



**Connie Ladenburg**  
Pierce County Council – District 4  
Executive Pro-Tempore



**Chris Beale**  
Tacoma City Council – District 5

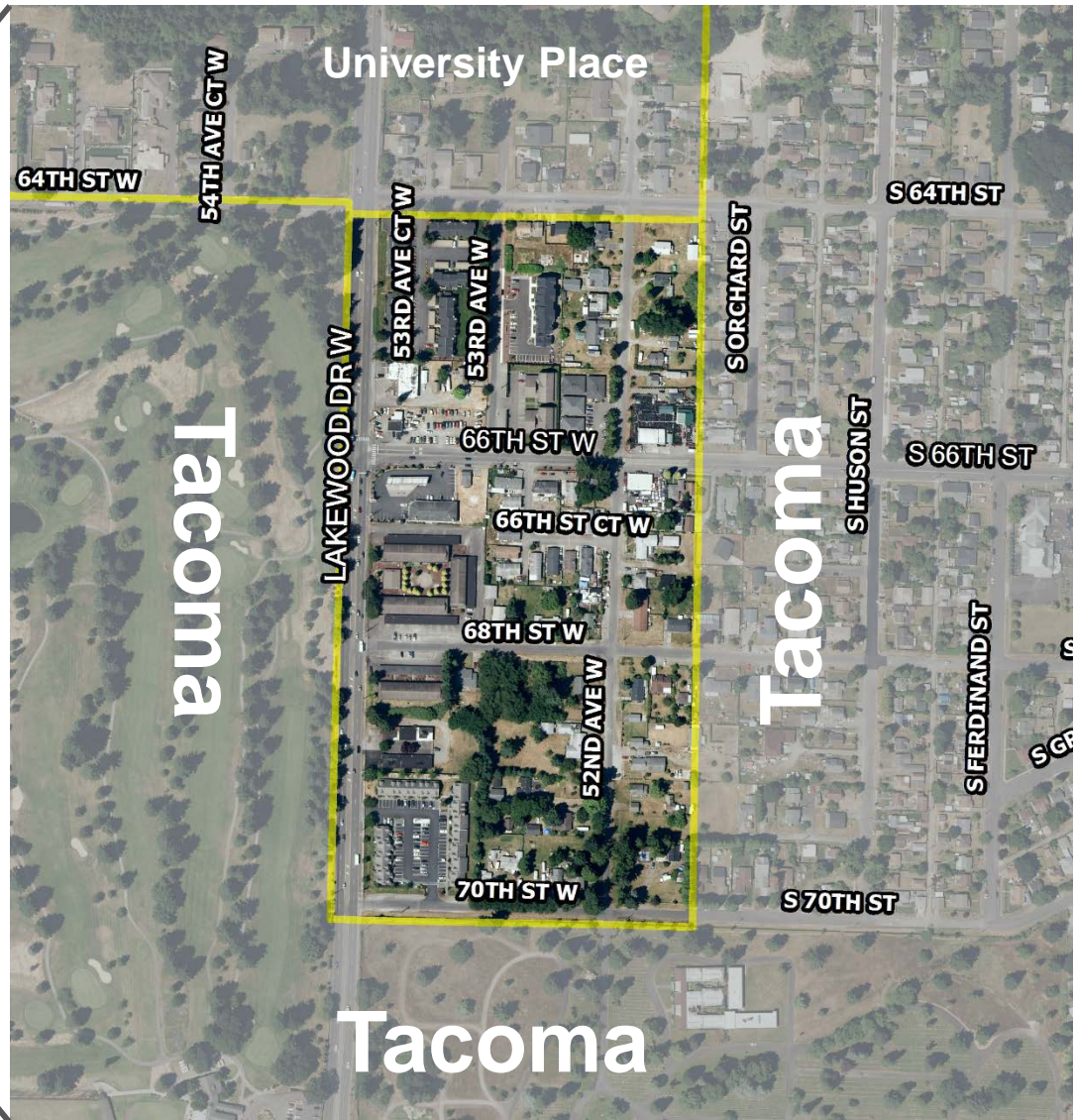
# Why are we here?

- Discuss potential annexation of Manitou
- Review the possible path forward
- Get your initial feedback (identifying issues)





# Unincorporated Manitou "Island"



# What is Annexation?



- Process of transferring land from one jurisdiction to another
- Manitou “Island” becoming part of City of Tacoma

# Pierce County and Annexation

## UNINCORPORATED URBAN GROWTH AREA GOAL AND POLICIES

**Goal:** All unincorporated lands within the urban growth area will either annex into existing cities or incorporate as new cities.

**MPP-DP-18:** Affiliate all urban unincorporated lands appropriate for annexation with an adjacent city or identify those that may be feasible for incorporation. To fulfill the regional growth strategy, annexation is preferred over incorporation.

**MPP-DP-19:** Support joint planning between cities and counties to work cooperatively in planning for urban unincorporated areas to ensure an orderly transition to city governance, including efforts such as: (a) establishing urban development standards, (b) addressing service and infrastructure financing, and (c) transferring permitting authority.

**MPP-DP-20:** Support the provision and coordination of urban services to unincorporated urban areas by the adjacent city or, where appropriate, by the county as an interim approach.

Puget Sound Regional Council

Pierce County

## ANNEXATION AND URBAN GROWTH AREA EXPANSION

- |                  |                                                                                                                                                                                                                       |
|------------------|-----------------------------------------------------------------------------------------------------------------------------------------------------------------------------------------------------------------------|
| <b>GOAL LU-1</b> | Promote the annexation of adjacent unincorporated urban areas by the neighboring city or town.                                                                                                                        |
| <b>LU-1.1</b>    | Pierce County shall encourage annexation of adjacent unincorporated urban areas by neighboring cities and towns through outreach to residents, land owners, and other stakeholders.                                   |
| <b>GOAL LU-2</b> | All unincorporated urban areas within the urban growth area shall be either be affiliated with neighboring cities and towns as Potential Annexation Areas (PAAs) or identified as potential areas to be incorporated. |
| <b>LU-2.1</b>    | Overlapping PAAs are not encouraged but may exist where two or more jurisdictions have mutual interest in an area.                                                                                                    |
| <b>LU-2.2</b>    | Any modification to an established PAA shall not result in an unincorporated urban <i>island</i> that is not affiliated with any city or town.                                                                        |
| <b>LU-2.3</b>    | The preference is for unincorporated urban areas to be affiliated with neighboring cities or towns rather than being identified as a potential area for incorporation.                                                |

## ONE TACOMA Public Facilities + Services

### Annexation Areas

**GOAL PFS-2** In partnership with residents, service providers and adjoining jurisdictions, incorporate the City's Urban Growth Area by 2040.

**Policy PFS-2.1** Promote growth and development within Tacoma's urban growth area that is consistent with the City's adopted policies, the Countywide Planning Policies for Pierce County, and Vision 2040 in order to discourage sprawl, direct higher intensity and density uses into designated centers, and support enhanced public transit.

**Policy PFS-2.2** Anticipate public facility and service needs of possible future annexation areas through long range planning, and when feasible develop facility capacities within the city to meet these needs prior to or after annexation.

**Policy PFS-2.3** Conduct joint planning with Pierce County and other adjacent jurisdictions for land use development, transportation and services within urban growth areas to ensure development is orderly, compatible and sufficiently served, and consistent with City plans.

**Policy PFS-2.4** Ensure through interlocal agreement or other mechanism, the compatible development of land—including the rate, amount, type and location of growth, and the provision and phasing of service within Tacoma's urban growth area—are consistent with the adopted policies and standards of the city.

**Policy PFS-2.5** Extension of utility services within Tacoma's urban growth areas should occur only upon annexation or if a commitment for annexation is in place.

**Policy PFS-2.6** Provide for active participation by affected residents and property owners in the joint planning, annexation proposals, or agreements for service within Tacoma's urban growth area.

**Policy PFS-2.7** Expand the city's boundaries within established urban growth areas in a manner that will benefit both the citizens of Tacoma and the citizens of the area to be annexed.

### POTENTIAL ANNEXATION AREAS

are lands that may become part of the City in the future. Tacoma's potential annexation areas include lands within the City's unincorporated Urban Growth Areas, shown in Figure 38.

See UGA-4 Joint Planning in the Countywide Planning Policies for more information on adopted joint planning policies and procedures.



Tacoma Solid Waste

## City of Tacoma's Annexation Policies:

- Accommodating growth and development with urban facilities and services
- Consistent with State and regional policies
- Joint planning
- Active participation by affected parties

# What could change?

## Public Services

Tacoma Public Libraries  
Police and Fire Departments  
Addresses  
...and more (see fact sheet)



\$\$\$

Property taxes  
Utility rates & fees  
Business Licenses and taxes



## Government Representation



County Council D4 and City Council D5

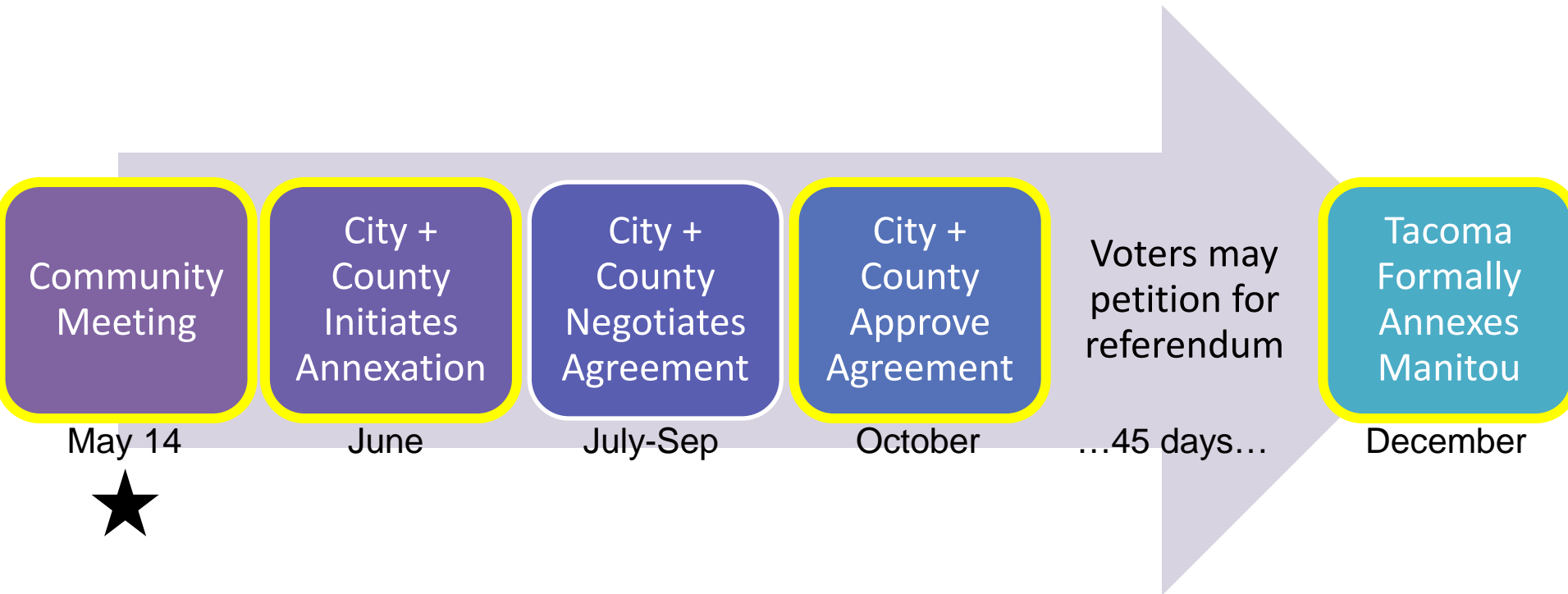




**You**

# Annexation Agreement Process and Involvement Opportunities

Tentative\*\*



*\*Involvement opportunities highlighted\**

## Comments...

- In person
  - City & County Staff
- Email
  - [dan.cardwell@co.pierce.wa.us](mailto:dan.cardwell@co.pierce.wa.us)
  - [lwung@cityoftacoma.org](mailto:lwung@cityoftacoma.org)

- Mail

Pierce County Planning and Public Works, Long Range Planning  
2401 S. 35<sup>th</sup> Street Room 175  
Tacoma, WA 98409